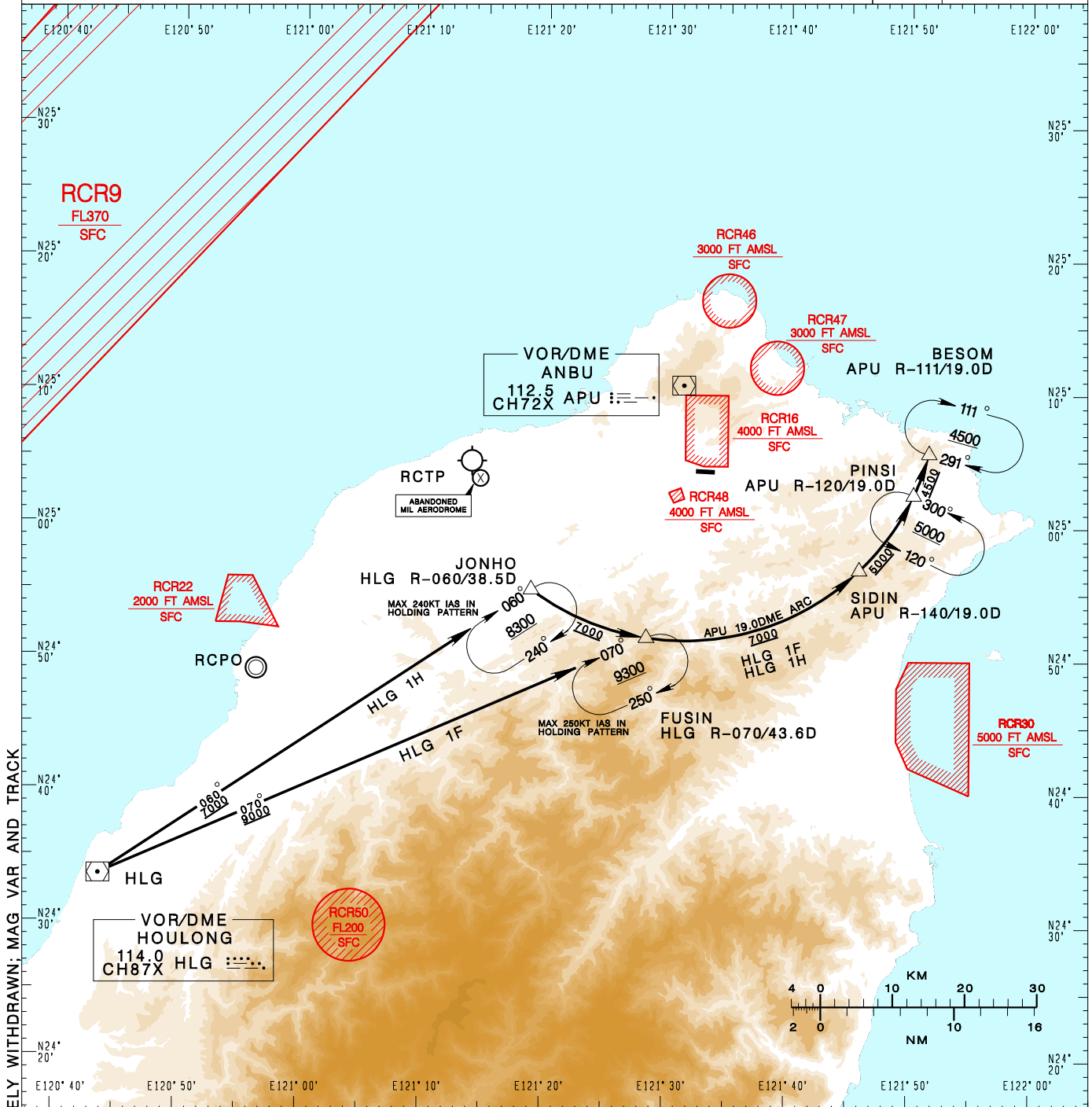


**臺北/松山機場**  
TAIPEI/SONGSHAN AD

RCSS STAR  
HLG 1F(RWY28)  
HLG 1H(RWY28)

TAIPEI ACC 126.7 129.1 127.9	TAIPEI APP 119.7 119.6 125.1	ATIS 127.4 341	VAR 5° W-2022 	 MSA APP 25NM	
Apt Elev: 18'		Trans Level: FL130			Trans Alt: 11,000'
BEARINGS ARE MAGNETIC; DISTANCES ARE NAUTICAL MILES; ELEVATIONS, HEIGHTS IN FEET					



CHANGES: RCR49 COMPLETELY WITHDRAWN; MAG VAR AND TRACK

**HOULONG ONE FOXTRAT ARRIVAL**  
Depart HLG, track HLG R-070 to FUSIN, then join APU 19.0 DME ARC to SIDIN, PINSI, then BESOM.

**HOULONG ONE HOTEL ARRIVAL**  
Depart HLG, track HLG R-060 to JONHO, then join APU 19.0 DME ARC to FUSIN, SIDIN, PINSI, then BESOM.